

S.G. IRON 'Y' - STRAINER (SCREWED)

Specification & Features:

Screwed Female ends to BS: 21 / ISO: 7 / IS: 554
 Stainless Steel (AISI - 304) or Brass perforated sheet screen is guided in body & cap.
 Screwed Cap upto 2" & Bolted cover for 2.1/2" & 3" Sizes.
 Fine Finish & Smooth Contours to minimize pressure drop in the strainer.
 Large screening area makes the strainer efficient in performance.



ITEM CODE # SG - 401

Pressure / Temperature ratings

Temperature °Celsius	50°	125°	250°	350°
Pressure bar	25	25	20	14

Materials of Construction

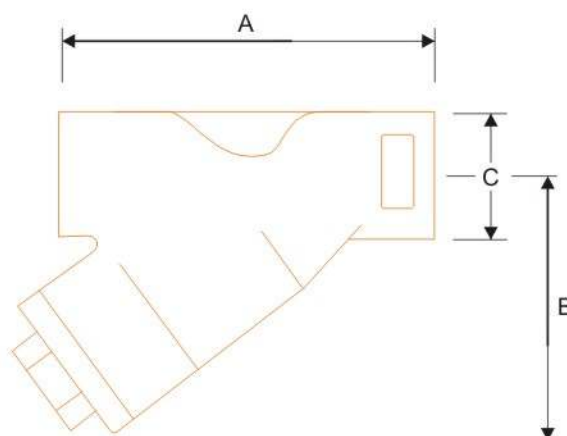
NAME OF PART	MATERIAL	STANDARD
Body & Cap	S.G. Iron	DIN 1693 GGG 40
Gasket	Non - Asbestos Fibre	
Screen	Stainless Steel	AISI-304
Fastners for 2 1/2" & 3"	Alloy Steel	ASTM 193 B7 / A194 2H

Limiting Conditions

Body Design Condition PN25
 PMA - Maximum Allowable Pressure 25 bar
 TMA - Maximum Allowable Temperature 350°C
 Designed for a Maximum Cold Hydraulic Test Pressure of 38 bar.

Sizes / Dimensions

Sizes		Dimensions		
inches	mm	A	B	C
1/2"	15	79	55	32
3/4"	20	93	65	36
1"	25	110	78	48
1-1/4"	32	140	103	60
1-1/2"	40	153	115	65
2"	50	177	140	76
2-1/2"	65	230	177	94
3"	80	237	183	105



B.V.M. MANUFACTURERS & EXPORTERS

